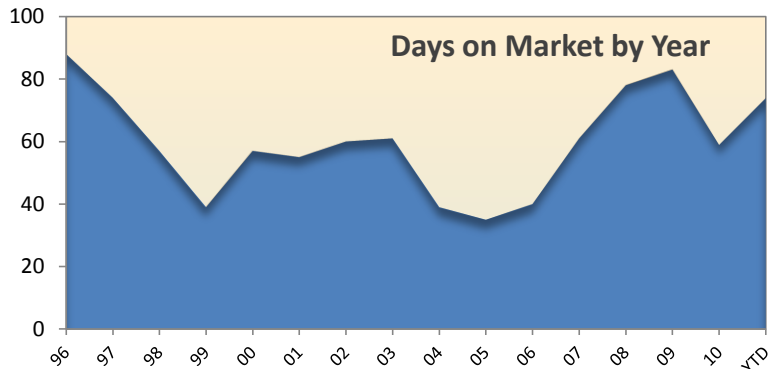
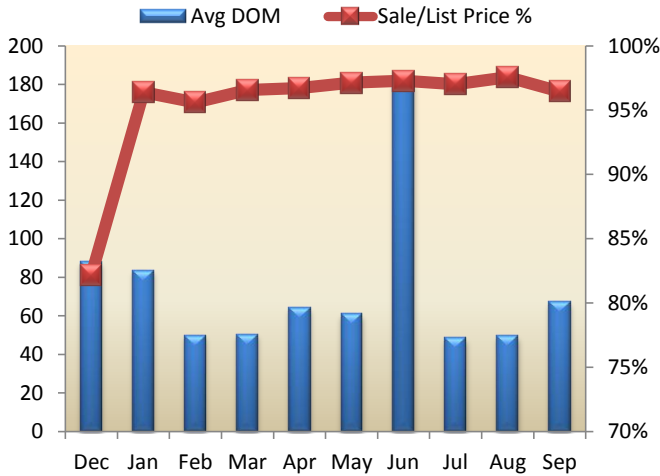


# Market Analysis: Pleasanton

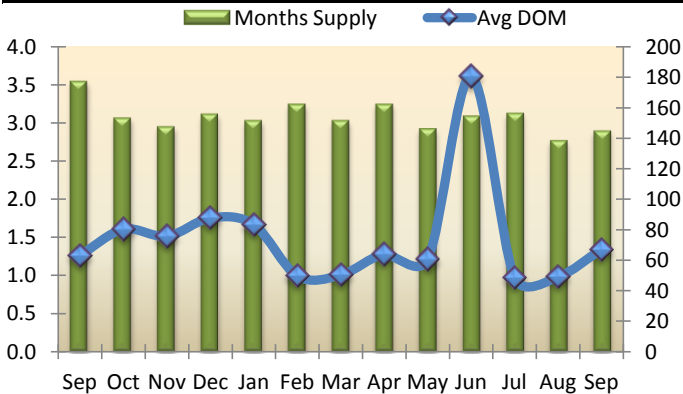
September-11

Days on Market (DOM) for the Pleasanton area year-to-date is around 74. The median detached home price in Pleasanton for September was \$765,000. As of the last day of September there were 173 active homes in Pleasanton. At current selling rates this means there is approximately 3 months of inventory in Pleasanton remaining.



## Summary Analysis (Single Family Residential)

	Active*	Pending	Sold	Months Supply	Avg List Price Sold	Median Sale Price	Avg Sale Price	Average DOM	Avg \$ Sqft List	Avg \$ Sqft Sold	Sale Price/List Price
Sep 10	202	46	45	3.5	\$905,571	\$729,000	\$880,772	63	\$382	\$373	97.26%
Oct 10	177	58	40	3.1	\$1,046,966	\$776,400	\$967,689	80	\$359	\$343	92.43%
Nov 10	149	36	39	3.0	\$821,314	\$695,000	\$797,475	76	\$360	\$350	97.10%
Dec 10	134	32	52	3.1	\$1,051,071	\$699,750	\$863,983	88	\$347	\$330	82.20%
Jan 11	128	43	30	3.0	\$960,390	\$665,500	\$925,756	83	\$360	\$354	96.39%
Feb 11	142	64	30	3.2	\$823,522	\$650,000	\$787,237	50	\$347	\$338	95.59%
Mar 11	156	67	55	3.0	\$813,226	\$737,000	\$785,320	50	\$345	\$335	96.57%
Apr 11	181	49	61	3.2	\$805,267	\$685,000	\$778,849	64	\$350	\$340	96.72%
May 11	190	80	50	2.9	\$869,732	\$723,750	\$844,883	61	\$343	\$334	97.14%
Jun 11	200	63	61	3.1	\$981,433	\$745,000	\$954,864	181	\$358	\$350	97.29%
Jul 11	200	64	49	3.1	\$972,540	\$789,000	\$943,561	48	\$354	\$345	97.02%
Aug 11	184	59	62	2.8	\$853,677	\$748,500	\$832,902	49	\$359	\$352	97.57%
Sep 11	173	53	47	2.9	\$949,589	\$765,000	\$915,914	67	\$358	\$347	96.45%
Month to Month	Sold	%Change	Avg list	% Change	Median Sale Price	% Change	Avg Sale Price	% Change	Avg DOM	% Change	Sale Price/List Price
Sep 11	47	4.44%	\$949,589	4.86%	\$765,000	4.94%	\$915,914	3.99%	67	6.43%	96.45%
Sep 10	45	-30.77%	\$905,571	6.07%	\$729,000	6.42%	\$880,772	7.63%	63	8.33%	97.26%
Sep 09	65	96.97%	\$853,771	-22.29%	\$685,000	-13.07%	\$818,358	-22.88%	58	-1.86%	95.85%



YTD Sold Summary					
	2011	2010	2009	2008	2007
Range	# listings	# listings	# listings	# listings	# listings
< 300k	2	4	1	1	
\$300k-399k	5	7	2	1	
\$400k-499k	31	16	23	6	
\$500k-599k	66	64	78	35	14
\$600k-699k	99	96	96	53	84
\$700k-799k	79	78	57	68	117
\$800k-899k	39	46	33	53	106
\$900k-999k	32	34	18	19	45
\$1m-1.5m	77	83	56	57	85
\$1.5m-2.0m	26	25	26	39	34
\$2m +	7	13	12	20	36

\*as of the last day of the month at 11:59 pm PST \*\*reflects change from 2005